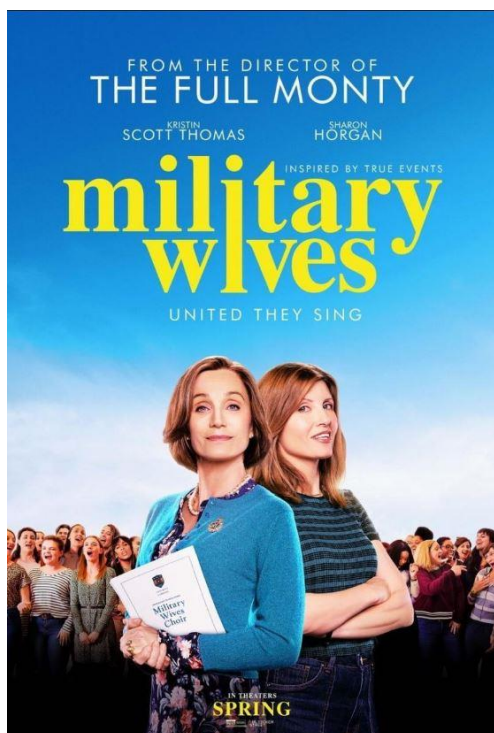


Boy, has the weather given us it all this week. I'm sitting here with the sun on back and they are telling me the temperature is 11deg outside, and yet at this time on Wednesday, there was a howling wind and torrential rain, and it was about 5 degrees.

Some brave ladies weathered the weather on Wednesday and they deserve nothing but praise for that. Delayed start today due to the frost, so that's something to keep in mind if you are planning on coming out early to play.

I said last week that the placing flag was changing, well it has. it is now **red**. Some-one mentioned it may be hard to see from along the 1st fairway, but I guess if you checking are local rules etc before you tee off, that would be something you check.



COME AND JOIN US FOR THIS MOVIE NIGHT FUNDRAISER.

AUGUST 10TH 2020, \$25 PER PERSON
(this includes nibbles, drink and lucky draw entry)

DOORS OPEN AT 6.45PM, MOVIE STARTS AT 7.30PM.

TICKETS IN THE OFFICE OR CHECK IN WITH ONE OF THE LADIES COMMITTEE.

Really great to see members putting their names up on the board to help out over the next couple of weeks around the course. Looks like a bit of a gender bias at the moment, but I'm sure you will all step up where needed. For me - I am working a 1/2 day on Monday and Friday for the next couple of weeks.

NORTH ISLAND STROKEPLAY AND BAY OF PLENTY OPEN

It is getting to the time of year when you start getting into preparation mode for this.

For our newer members who aren't aware of this, on behalf of NZ Golf, we host the North Island Strokeplay Tournament, which is a Tier 1 tournament in the order of merit rankings. Not only does this give us the right to call ourselves a Championship Course, it is also a huge fundraiser for the Club. There are over 100 of the top amateur golfers in New Zealand playing, and it is the chance to not only see some top-notch golf, but also to support the club. (We have hosted the Bay of Plenty Open for over 60 years, and these two tournaments are currently combined)

It is being held over Sept 16th to 20th 2020. (Sponsors Day, Practice day, one round each Friday and Saturday, then two rounds on Sunday)

We are looking for anyone interested in being on the organising committee for this, and also to let members know that we will be looking again for spotters, starters, marshalls etc over these days. Just let me know if you can help.

LOST – THE WHITEBOARD FROM THE CLUBHOUSE THAT HAS: TODAY SPONSORED BY..... ACROSS THE TOP.

IF YOU HAVE SEEN IT, CAN YOU LET ME KNOW WHERE, AS I HAVE SEARCHED JUST ABOUT EVERYWHERE I CAN THINK OF.

RESULTS FROM THIS WEEK:

LADIES:

Saturday - Putting

A Hay 30, B Perkinson 31, B Holmes 33, T Eilbeck 34

Pak'nSave Nearest the Pin: T Eilbeck

Eastern Bay Towing Longest Putt: I Jillett

Barker's Two's: S McLaverty

Wednesday - Nett:

H Corbett 75, L Steel 76, J Jacobsen 78, S McLaverty 78, J Shaw 80, R Hinds 83, J Gordon 83

Bin Inn Nearest the Pin: H Corbett

McLaverty's Longest Putt: J Shaw

Hall & Harper Most Golf: B Anderson

FRESH MARKET PLAYER OF THE WEEK: T Eilbeck

LGU NETT & PUTTING RESULTS

LGU 0-18.4- Hilary Corbett 75, L Steel 76, B Holmes 77, 18.5 - 25.4: J Jacobsen 78, S McLaverty 78, 25.5 - 40.4 T Eilbeck 74

PUTTING: 0 - 18.4 L Steel 29, A Hay 30, H Corbett 31, J Shaw 32, 18.5 - 25.4 J Jacobsen 33, S McLaverty 38, 25.5 - 40.4 T Eilbeck 34

Thursday Men's Day:

A Fergusson 40, H Jones 40, K Walker 39, S Heberley 38, N Johnson 37, J Dippie 36, E Kelly 36, R Selwyn 35, P Revell 35, M Badger 35, K Gundersen 34, PJ Harawira 34, E Maui 34, R Kamphorst 34, C Bluett 34, R Barker 34, B Simister 34, J Johnston 34, A Broadmore 33, H Ulufonua 33

Hobson Wealth Nearest the Pin on 18: B Foster

Kope Pharmacy & Post Shop Nearest the Pin on 9: S Herdman
Best Gross: S Heberley
Ruegg's Most Golf: L Burt
Hidden Hole: C Jacobsen
Two's: A Dickey, K Kingi, S Heberley, B Simister, J Crawshaw, R Boarker

BAYLEYS' MEN'S TEAMS DAY:

119 B Simister, J Carter, A Fergusson, R Kamphorst
110 P Gundersen, B Bain, B Willets, R Barker
108 S Herdman, J Dippie, J Needham, M Reid

COMING UP THIS WEEK:

Sat 11th MEN White Tee haggle
LADIES 2nd round Appleby Cup, 2nd LGU
Tues 14th 9H Ladies 3rd Strokeplay, Nett, LGU
VETS Whittakers (I think)
9H Men Mixed tees
Wed 15th - POWER OUTAGE 9.00AM TO 2.00PM
LADIES 2nd round Appleby Cup, 2nd LGU
Thurs 16th MEN Blue Tee haggle
Fri 17th FUNCTION IN CLUBROOMS



RULES OF GOLF EDUCATION COURSE 2020

COMMENCES ON 1ST AUGUST 2020

For Golfers wanting to gain a better knowledge and understanding of the Rules of Golf

- 5 Assignments of 20 questions each emailed out over a period of 10 weeks.

Participants will be sent answers for assignments 2 weeks after the questions so they can mark their own work.

ENTRY - \$10.00

Entries Close Friday 31st July

Please email your entry with your name, address, contact phone number and home club to :

hogolfrules@gmail.com

Bank Deposit \$10.00 to Account Number 03-1552-0208437-00
Please use your surname as a reference.
Find us on Facebook – Bay of Plenty Golf Rules Association

Well, that's it for this week.

Hope you have a great weekend, and I'll catch you all next week.

TERESA



Lewis Ramsay ETB Realty Ltd Licensed Agent REAA 2008
Sales Consultant
M 027 478 3432 | P 07 308 6359 | E lewis.ramsay@harcourts.co.nz

From January 1st 2019
New Anti-Money Laundering (AML) legislation requires that all real estate operators seek more information from clients relating to their identity and source of funds. [Click to learn more about how this affects you.](#)